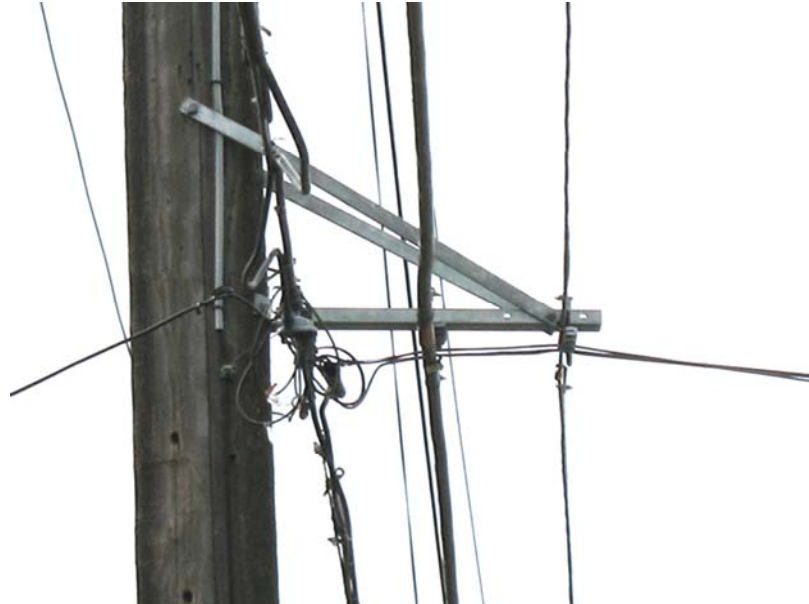


BRACKET, COMMUNICATIONS CABLE ATTACHMENT



1. Scope

This construction standard provides the requirements and details for the installation of communications cable attachment brackets for additional communication lines to be added.

2. Application

This document instructs SCL crews how to construct and install the communications cable attachment bracket and clarifies clearance requirements.

3. Construction Notes

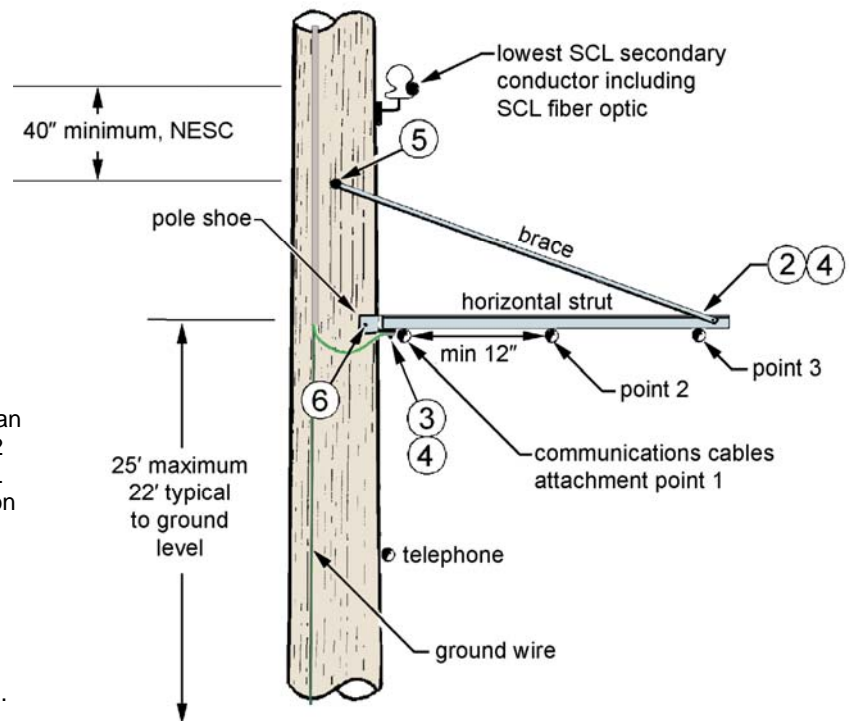
3.1 Bracket Height

The bottom of the bracket must be no higher than 25 feet above ground level. Typical height is 22 feet. Reference clearance requirements in SCL Construction Standard 0093.02, "Attachments on Standard Utility Poles."

3.2 Separation

The distance between the tallest point on the bracket braces and the lowest SCL secondary conductor (including SCL fiber optic) must be a minimum of 40 inches as required by the NESC.

Figure 3.1, Location on Pole



standards coordinator	standards manager	unit director
 Devyn Byrnes	 John Shipek	 Pamela S. Johnson

3. Construction Notes, continued

3.3 Grounding

To ground the communications bracket, push ground wire and connector splice (Item 11) inside terminal lug (item 12) one inch and crimp with Nico Press. Attach lug between 1/2-inch bolt (item 3) and nut.

Figure 3.3a, Ground Lug



Figure 3.3b, Nico Press



Figure 3.3c, Routing Ground Wire



3.4 Communications Bracket Strut Orientation

Orient the flat side of the horizontal strut down – open side of the U-shape, pointing up. The pole shoe tab and terminal clamp will sit flush against the underside of the horizontal strut.

4. Material List

Item	Quantity	Description	Stock No.
1	1	COMMUNICATIONS BRACKET, includes one horizontal strut channel, two braces, and one pole shoe	010408
2	1	BOLT, machine, galvanized 1/2" x 4-1/2"	780803E
3	1	BOLT, machine, galvanized 1/2" x 1-1/2"	780794E
4	2	WASHER, lock, split, galvanized 1/2"	584255E
5	1	BOLT, length can vary	780847E
6	2	BOLT, lag, 1/2" x 4", fether drive	785261E
7	as required	WIRE, THWN, 600 V copper #8 AWG	612277
8	1	TAP, split bolt, parallel type	668861E
9	as required	MOULDING, plastic	582060E
10	as required	STAPLES, moulding	583200E
11	1	CONNECTOR SPLICE, compression, copper	677354E
12	1	TERMINAL LUG, compression	677071E

5. References

0093.02; "Attachments on Standard Utility Poles;" Construction Standard; SCL

5631.1; "Bracket, Communications, Cable Attachment;" Material Standard; SCL

Brewer, Steve; SCL Crew Chief; subject matter expert; (steve.brewer@seattle.gov)

Byrnes, Devyn; SCL Standards Student Intern; subject matter expert and co-originator of 0093.06; (devyn.byrnes@seattle.gov)

Lu, Curtis; SCL Standards Engineer; subject matter expert and co-originator of 0093.06; (curtis.lu@seattle.gov)